

The International Brotherhood of  
Magicians.

(THE BRITISH RING No. 25).

---

Fifth Annual

CONVENTION

Royal Leamington Spa,

ON

FRIDAY, SATURDAY & SUNDAY,

28th, 29th and 30th June, 1935.



Official Souvenir Programme.





**OSWALD RAE.**

Founder and President of the British Ring.

# The British Ring.

## **PRESIDENT :**

OSWALD RAE, Esq.

## **VICE-PRESIDENTS :**

DAVID DEVANT, Esq.

GUS FOWLER, Esq.

LAURANCE GLEN, Esq.

L. BOFEYS, Esq.

## **COMMITTEE :**

GEORGE BLAKE.

ARCHIE BYFORD.

HARRY KAYE.

WALTER KEMP.

MILTON WOODWARD.

## **HON. SECRETARY AND TREASURER :**

WM. G. STICKLAND,

“The Wand,” Ferndown, Wimborne, Dorset.

## RAILWAY FACILITIES :

PADDINGTON.	LEAMINGTON.	LEAMINGTON.	PADDINGTON.
9.10 a.m.	c. 10.43 a.m.	8.7 a.m.	10.0 a.m.
11.5 a.m.	12.40 p.m.	9.28 a.m.	11.0 a.m.
2.10 p.m.	3.40 p.m.	10.27 a.m.	12.5 p.m.
4.5 p.m.	5.40 p.m.	12.28 p.m.	2.0 p.m.
6.10 p.m.	7.40 p.m.	3.27 p.m.	5.5 p.m.
7.10 p.m.	8.40 p.m.	4.23 p.m.	6.0 p.m.
7.40 p.m.	10.8 p.m.	6.30 p.m.	8.5 p.m.
		8.17 p.m.	10.5 p.m.

*Note.*—c. slip coach.

BIRMINGHAM S.H.	LEAMINGTON.	LEAMINGTON.	BIRMINGHAM S.H.
9.0 a.m.	9.25 a.m.	9.0 a.m.	9.37 a.m.
9.10 a.m.	9.35 a.m.	9.30 a.m.	10.22 a.m.
10.0 a.m.	10.25 a.m.	10.0 a.m.	10.30 a.m.
10.55 a.m.	11.21 a.m.	11.15 a.m.	11.46 a.m.
11.40 a.m.	12.9 p.m.	12.20 p.m.	12.50 p.m.
12.0 noon.	12.25 p.m.	12.42 p.m.	1.10 p.m.
12.45 p.m.	1.15 p.m.	1.52 p.m.	2.20 p.m.
3.0 p.m.	3.25 p.m.	2.42 p.m.	3.10 p.m.
3.55 p.m.	4.20 p.m.	3.42 p.m.	4.10 p.m.
6.0 p.m.	6.25 p.m.	5.42 p.m.	6.10 p.m.
7.50 p.m.	8.15 p.m.	7.42 p.m.	8.10 p.m.
7.55 p.m.	8.25 p.m.	8.42 p.m.	9.10 p.m.

TRAINS TO WEST OF ENGLAND AND SOUTH WALES :— 7.10 a.m., 9.5 a.m.,  
10.50 a.m., and 5.50 p.m.

TRAINS TO YORK, NEWCASTLE, etc. :— 10.27 a.m. and 12.12 p.m. York  
only 1.19 p.m. and 3.27 p.m.

TRAINS TO SOUTHAMPTON :— 9.38 a.m., 11.25 a.m., 1.19 p.m.\*\*, 4.40 p.m.,  
and 6.40 p.m.

*Note.*—\*\*Through train.

**CONVENTION HEADQUARTERS :**

The Bath Hotel,  
Bath Street,  
\* Leamington Spa.

All members and visitors are requested to register at the above on arrival, when they will receive a Convention Badge admitting them to the Civic Reception and other facilities offered by the Corporation.

REGISTRATION FEE for Non-Members, 1s.

CONVENTION ANNOUNCEMENTS will be posted on a Notice Board at Headquarters.

**NOTE TO NON-MEMBERS.**

You are invited to membership of the British Ring and membership forms will be available during the Convention. Particulars from the Secretary.

**BOOKING AGENTS (for Public Shows) :**

Messrs. DALE, FORTY & CO., Parade, Leamington Spa.

# Programme.

## FRIDAY, JUNE 28th.

3 p.m. OFFICIAL OPENING of the Convention by the President at the Bath Hotel.

3-45 p.m. Tea at the Bath Hotel.

4-45 p.m. SENSATIONAL OUTSIDE ATTRACTIONS.

THE GREAT LEVANTE, handcuffed, chained and leg-ironed will be thrown into the River Leam from the York Bridge. Can He Escape ?

LEVANTE will also present his marvellous £1,000 Steel Trunk Mystery.

N.B.—The trunk will be on view at Messrs. P. H. Woodward & Co., Ltd., The Parade, Leamington, three days prior to the Convention.

8-15 p.m. His Worship the Mayor of Leamington will receive members and ladies at the Royal Pump Room and Baths.

Music by the EDNA WILLOUGHBY TRIO.

Light Refreshments during the evening.

Special Programme of MAGIC :—

1. ARCHIE TEAR and a Pack of Cards.
2. GEORGE DAVENPORT, " Magic of 1935."

**Friday, June 28th**—continued.

3. DONALD CROMBIE, "The Magical Connoisseur."
4. WM. G. STICKLAND and "JIMMY," Nautical Nonsense.
5. ESLER KESSEN, Tricks and Stories.
6. OSWALD RAE, "The Bewildering Humorist."
7. STANLEY CABLE, Eastern and Western Magic.

**SPECIAL MIDNIGHT CABARET ARRANGED BY  
HARRY KAYE.**

MILTON WOODWARD and THE FOLLY GIRLS.  
JOHN RAMSEY "Sleights from Ayr."  
BERYL MEAKIN "Australia's Funny Fat Girl."  
THE GREAT LEVANTE, The Famous Australian Magician.  
JACK CROSBIE "Six Feet of Art and Mystery."  
DJINN and his Magic.  
MILLICENT COOPER, B.B.C. Soprano and Entertainer.  
ALF. GREENS and HIS BOYS.

M.C. : WALTER KEMP.

Evening Dress.

---

**GRAND MAGICAL BALL AND CABARET,**

at PALAIS-DE-DANSE, 9—2.

Admission Free to Members and Lady Friends.

---

**SATURDAY, JUNE 29th.**

10-30. Official CONVENTION PHOTOGRAPH will be taken by Tom Hayter, at front of the Town Hall.

**At the JEPHSON GARDENS PAVILION.**

2-45. SPECIAL CHARITY MATINEE for Children (see programme).

7-45. GRAND PUBLIC MAGICAL ENTERTAINMENT (see programme).



**SUNDAY, JUNE 30th.**

**At the Bath Hotel.**

- 10-30. GENERAL MEETING for members only.  
11-30. SALE OF APPARATUS. (Lists should be handed to the Hon. Sec. on Saturday).

**Afternoon :**

**INFORMAL ENTERTAINMENT.**

---

**JEPHSON GARDENS PAVILION, LEAMINGTON SPA.**

**SATURDAY, 29th JUNE, at 2-30 p.m.**

---

**CHILDREN'S MATINEE.**

(Part proceeds in aid of Local Charities).

---

## **Programme.**

**COMPÈRE ... WALTER KEMP.**

1. OSCAR PAULSON—Liverpool's Favourite Childrens' Entertainer.
  2. UNCLE DICK (of The Mystic Two)—Magical Clown.
  3. DJINN and his Magic.
  4. ARCHIE BYFORD and his popular Punch and Judy.
  5. ERIC J. WILLIAMS—"The Whimsical Wizard,"  
"Wizardry and Wisecracks."
  6. FRANCIS WHITE—"Seeing is not believing."
  7. STANLEY CABLE—"Chinese Magic."
- 

**STAGE DIRECTION ... HARRY KAYE.**

Assisted by MORRIS ROSS.

---

INCIDENTAL MUSIC BY THE  
**MAXWELL DYER ORCHESTRA.**

JEPHSON GARDENS PAVILION, LEAMINGTON.

SATURDAY, JUNE 29th, at 7-45 p.m.

GRAND PUBLIC MAGICAL ENTERTAINMENT.

## Programme.

COMPÈRE ... WALTER KEMP.

1. OVERTURE—THE CONVENTION ORCHESTRA.
2. THE FOLLY GIRLS.
3. RAOUL—"Le Magician Francais"—"Wonders without Words."
4. BERYL MEAKIN, Australia's Funny Fat Girl.
5. WM. G. STICKLAND, "The Wessex Wizard," assisted by Miss POPPY GWYNNE—"Magic a la carte."
6. OSWALD RAE—"The Bewildering Humorist."
7. HARRY ALBION—Comedy Dancing Juggler.
8. H. PARK SHACKLETON—The Well-known Bradford Magician.
9. MASKELYNE'S MYSTERIES, presented by **THE DAVENPORTS.**
10. ORCHESTRAL INTERLUDE — THE CONVENTION ORCHESTRA.
11. MARELLES MARVELLOUS MARIONETTES.
12. JACK CROSBIE—"Six Feet of Art and Mystery."
13. MILTON WOODWARD, Wizard of Mirth and Mystery.
14. THE FOLLY GIRLS.
15. The World-Famous Australian Illusionist, **THE GREAT LEVANTE.**

THE KING.

CONVENTION ORCHESTRA UNDER THE DIRECTION OF  
MAXWELL DYER.

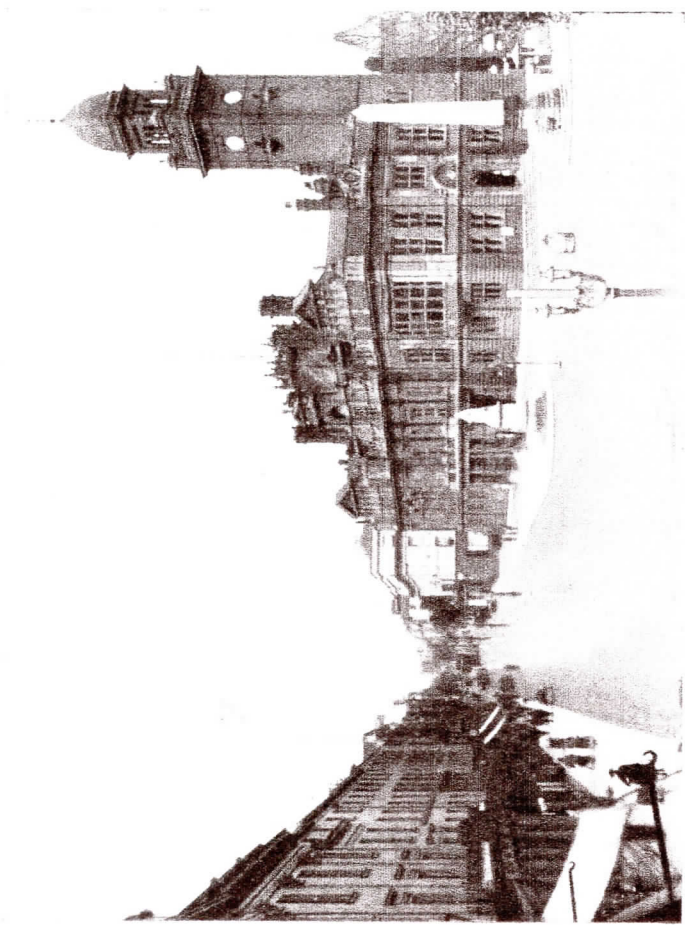
STAGE DIRECTION ... HARRY KAYE.

LEAMINGTON SPA is undoubtedly an exceptionally attractive town, one unrivalled in the early spring and summer months for the gorgeousness of its public gardens and the foliage of noble trees shading in boulevard fashion its streets and handsome squares. In whatever direction one strolls, flowers and foliage are never out of sight. Even on the lamp standards in the centre of the Town will be seen baskets of bright flowers. The garden charm extends to the upper end of the town leading into fields and country lanes on to a fine old Warwickshire road, taking the walker further afield into the Shakespeare country.

Not only is Leamington highly endowed by nature—every aspect pleases. The cheerfulness of the Parade with its fine shops and hotels, their balconies and porticoes gay with flowers, the pleasing sound of music from the Pump Room, the general air of prosperity and happiness that pervades the whole town—all these attractive externals make Leamington an ideal place for a holiday or for a permanent residence. The flying bird of passage will benefit from a mere "look round" in this cheery town; the holiday roamer, fixing his headquarters at Leamington whence to explore the Shakespeare country, will be enchanted, while the sufferer who comes for the "cure" will find such pleasant conditions a wonderful help.

And now a word about the Pump Room. The steadily increasing number of people coming for treatment has made it absolutely necessary for more accommodation to be provided. This has now been done by the reconstruction of the whole Pump Room establishment, the co-operation of the Ministry of Health having enabled the Pump Room Committee to carry out their wide-reaching programme, with the result that Leamington is now equipped with health baths, equal, as already indicated, to any in England or on the Continent, better in many respects than those at some of the foreign thermal stations.

Reconstruction cost some £26,000. In its administration, the Corporation have the co-operation of the Medical Advisory Committee and the medical profession in general take considerable interest in the work there. During the past ten years, everything possible has been done to keep abreast of the times in making provision for the scientific application of Leamington's world renowned Spa water. Leamington is a member of the British Spas Federation, and its waters, which are scientifically controlled, are constantly analysed by expert officers. The establishment is under the supervision of a highly experienced and fully qualified balneologist, and provides every proved form of balneological, electrical and accessory treatments for rheumatism, gout, sciatica, and kindred troubles. Every member of the staff is medically certificated, and individual attention, at low cost, is assured as against institutional treatment.



Photo]

Cambridge Spa—Town Hall and Parade.

Walden Hammond

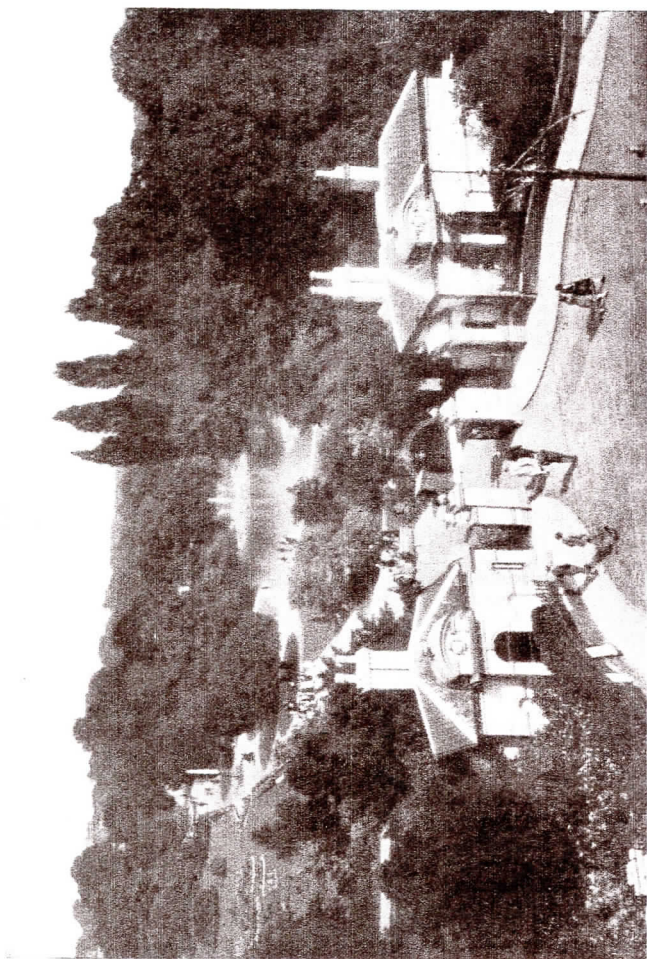
An entirely new heating system has been installed at the Turkish Baths. There are two swimming baths, the larger measuring 110ft. by 40ft. They are equipped with a modern filtration plant which gives a complete change of water every five hours. Facilities are provided for mixed bathing, while, at the end of the Summer season, the smaller bath is available for Winter swimming. Galas and water polo matches are held at the Baths practically every week during the Summer months.

In the pleasant Annexe of the Pump Room, Spa water is served. Here are to be found the Information Bureau and the Spa Manager's office. Visitors are received with every courtesy, and any information they require respecting Spa treatment, the town and the surrounding country, is readily given. In this department there is also to be found a host of informative literature relating to Leamington and the Shakespeare country in general.

The Pump Room Tea Room and Concert Hall are particularly attractive. Good service is assured, and the Tea Room is comfortably furnished, being a charming rendezvous morning and afternoon. Daily, all the year round, an orchestra gives delightful concerts, and first-class vocalists and entertainers are also engaged. During the Summer months teas are served under the colonnade of the Pump Room, whence one looks on to the Jephson Gardens opposite.

Adjoining the Pump Room are the Pump Room Gardens, several acres in extent, bounded on one side by the River Leam and on the other by a handsome lime-bordered promenade. Features of these Gardens are the chestnut trees, the blossom of the May tree and the tastefully laid-out flower beds. During the season, commencing at Easter, noted Military bands play each morning and afternoon. Comfortable chairs are available for those who wish to pass the hours reading and enjoying the beauty of the surroundings on a Spring or Summer day.

The Jephson Gardens are among the most beautiful ornamental public gardens in the country. On entering them from the Parade, two handsome Fountains attract the eye. They are exact replicas of Hampton Court's famous fountains, and are greatly admired by Leamington's many visitors. In various parts of the Gardens there are quiet retreats, while chairs are provided for those who wish to sit beside the lake and fountains or on the riverside lawns. There is a buffet where teas and other refreshments are served. These may be enjoyed in the shade of the trees in the rose garden, also on the lawns by the river. During the season, Military band and concert party performances are given in the Pavilion, which has seating accommodation, entirely under cover, for 1,200 people. The afternoon and evening shows by the members (see programme) will be staged here.



*Photo)* Leamington Spa—Jephson Gardens (showing Fountains), [Walden Hammond  
Opened on May 12th, 1846, in the presence of the great physician Dr. Jephson, whose honored name the Gardens bear.

Illuminated concerts are frequently given in these Gardens during the summer months. On these gala nights myriads of fairy lights present a colourful spectacle with flood lights giving additional effects to a charming scene.

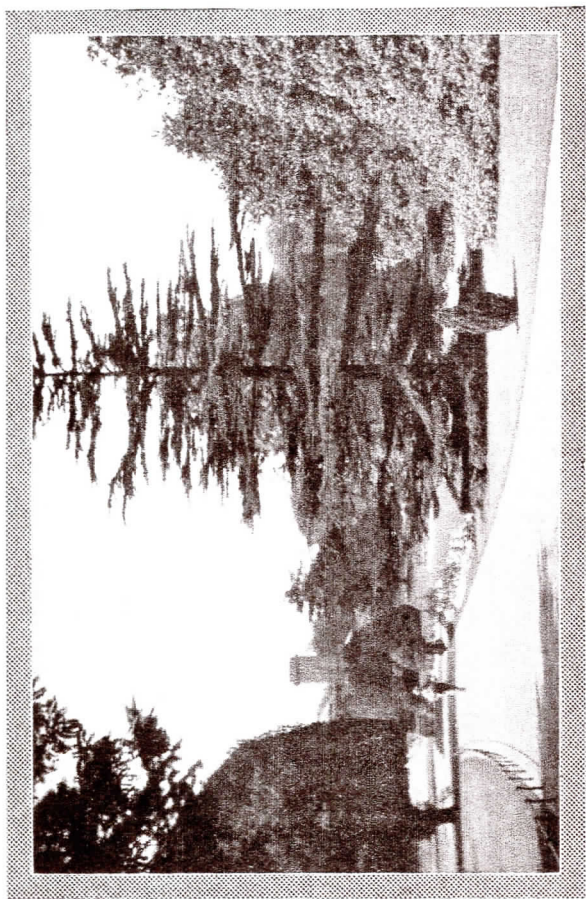
In addition to the Pump Room Gardens and the Jephson Gardens, there are the Mill Gardens and the Victoria Park. The Victoria Park is a vast sports ground, equipped with tennis courts (hard and grass), bowling greens, a putting green, and a children's playground. It also provides facilities for football, cricket, hockey, athletics, and recreation in general. There is boating on the upper and lower reaches of the River Leam, and boats may be hired from the boat houses in Adelaide Road and in the Mill Gardens. The York Walk and New River Walk, with their lovely display of rhododendrons, extend for a considerable distance along the river bank. Leamington has two excellent 18-hole golf courses, the Leamington and County Golf Club at Whitnash and the Leamington Golf Club at Milverton. There is Sunday play on both. The Warwickshire Croquet Club have handsome lawns at Guy's Cliffe Avenue. Leamington Cricket Club play at Lillington Avenue, and their fixtures include Sunday matches.

Handsome squares, enclosing their own gardens, give Leamington a distinguished appearance. The Spa is favoured with an equable climate, and charming country field paths are to be found in abundance near its boundaries. The town possesses excellent schools (public and private), a good Library and Museum, and a charming Art Gallery, where loan exhibitions are held throughout the year. Leamington is a well favoured shopping centre and motorists are provided with free car parks in the centre of the town.

It is of interest to note that Leamington enjoys the distinction of being the first place where the now popular game of tennis was played. At the old Manor House one can still see the original green and can, in fact, play on it.

For the pedestrian there are many charming walks within measurable distance, taking one to some famous country seat or pretty village hamlet. Warwick, along the old road, is distant two miles. Another mile or so beyond takes one to Guy's Cliffe, the picturesque seat of Capt. Heber-Percy, a spot full of the romance of legend. Cubbington, Offchurch, Radford, and Whitnash are among the near villages which will not fail to appeal to all lovers of the countryside. Three miles south from Whitnash, situated on the Fosse Way, lies Chesterton Camp, well worth a visit, for here historian, antiquary and all others will find much to interest. The spot shows the skill with which the Romans selected their vantage-points.

At the village of Stoneleigh, distant in another direction about four miles, may be seen the Abbey home of Lord Leigh, standing in the



Photo

*Leanington Spa—A View in the Pacific Gardens.*

(Warden Hammond)

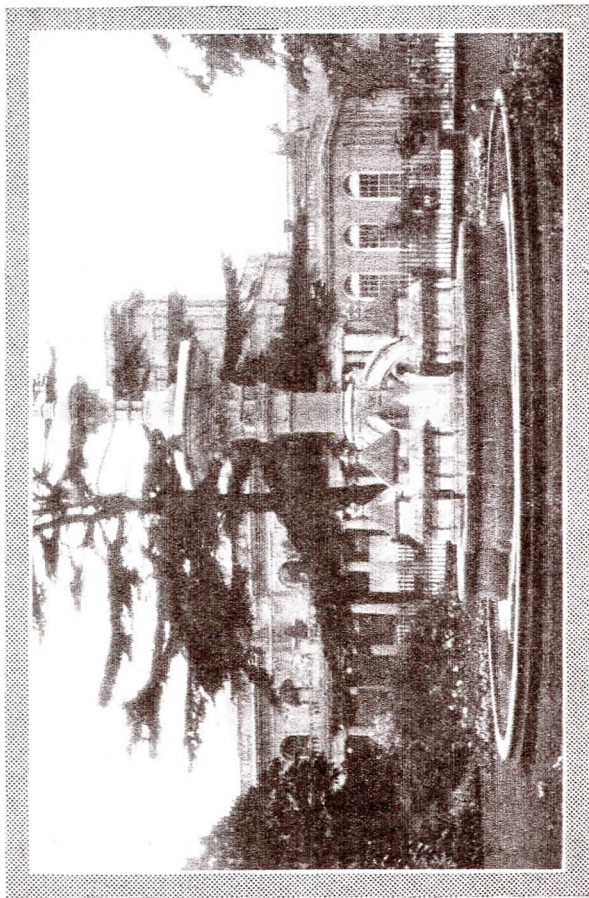


midst of a large park in which the grand old trees are a feature. Beneath one giant oak fiction asserts that Shakespeare composed some of his plays. The mansion was erected in the early part of the eighteenth century, but it has since undergone numerous alterations, and is now one of the finest country seats in the kingdom. Proceeding from Leamington to Stoneleigh, one crosses the handsome new Stare Bridge, which has taken the place of the ancient Stare Bridge built by the Cistercian monks of Stoneleigh about the fourteenth century. The old structure now forms part of a footpath beside the new length of road and bridge.

In walking to Stoneleigh it is quite worth while to make a slight detour when two miles and a half up the Kenilworth Road, by taking the footpath on the right opposite to Blakedown Mill, across the fields to the pretty little village of Ashow.

More distant places which will repay a visit, and which can be reached from Leamington daily by train, motor char-a-banc or motor 'bus, are Coventry, Stratford-upon-Avon and Kenilworth, while some of the great battlefields of England's two great civil wars—Edge Hill, Evesham, Tewkesbury, Bosworth, Naseby and Worcester—can be visited within the day. It is worthy of note that Birmingham (the second City in the Kingdom) is reached by train in 26 minutes and London in 1½ hours. There is a splendid service to both Cities.

So make a special effort to enjoy the joys of Leamington.



Photo]

Leamington Spa—The Royal Pump Room and Baths

[Walter Hammond

## RECOMMENDED HOTELS.

THE BATH, Bath Street.—8s. 6d. Bed and Breakfast.

THE CROWN, High Street.—8s. 6d. Bed and Breakfast.

(If any difficulty in obtaining suitable accommodation write—

SPA MANAGER,

PUMP ROOM,

LEAMINGTON SPA,

Stating requirements).

---

The Corporation of Leamington Spa offer delegates the following facilities :—

Bathing in the Inside Swimming Pool,  
Royal Pump Room and Baths, Gardens,  
etc.

---

THE PRESIDENT, OFFICERS and MEMBERS of

### **THE BRITISH RING,**

desire to express to all who have assisted to make this Convention a success, including the Mayor and Corporation of Leamington Spa and Mr. W. J. Leist, the Spa Manager, their sincere appreciation of their great hospitality and valuable co-operation. Also to Messrs. Dale, Forty & Co., for kindly acting as Booking Agents.

